

CYBERBULLYING IN YOUTUBE'S COMMENTS ON "TRIBUN MEDAN TV CHANNEL"

Vivi Novalia Sitinjak¹, Panjaitan Devi Tania², Silitonga Bahagia Halomoan³, Yoehadi Vincent⁴

^{1,2,3,4} Department of English Language and Literature, Fakultas Sastra, Universitas Methodist Indonesia

vivisitinjak0@gmail.com¹
devipanjaitan560@gmail.com²
bahagiasilitonga93@gmail.com³
vincentyoehadi7@gmail.com⁴

Abstract

Cyberbullying is defined as bullying, threatening, and even harming a person using electronic communication which has been happening lately and can be seen in our daily life. The study specifically focuses on cyberbullying on the YouTube channel "Tribun Medan TV". The purpose of this study is to identify the types of cyberbullying used by the commenter and understand how they bully others in their comments. The aim of this study is that people can anticipate the use of words in commenting on social media. If not, it can have a bad effect on the recipient. There are nine types of cyberbullying namely flaming (online arguments), harassment (persistently sending, threatening, or offensive messages), cyberstalking (following or stalking someone in online system), denigration (making some negatives statements about someone), masquerade (acting to be an unknown online), outing and trickery (posting someone's identity), exclusion (deliberately not included someone in online groups or activities), impersonation (playing to be someone else in the online communication), and sexting (sending sexually explicit messages or images). Things that might happen such as mental down, death, etc. This study applies a qualitative descriptive method. In order to analyze the data, researchers employ an interactive analysis model that Miles and Huberman (1992:23) proposed. The result of this study finds 15 comments containing instances of cyberbullying, and the findings suggest that three types of cyberbullying are present on the "Tribun Medan TV" YouTube channel." They are flaming, harassment, and denigration.

Keywords: Cyberbullying, YouTube, Ferdi Sambo

INTRODUCTION

Cyberbullying is defined as bullying, threatening, and even harming a person using electronic communication which has been happening lately and can be seen in our daily life. Cyberbullying forms, include sending, compromising messages, spreading reports, and posting humiliating photographs or recordings of somebody.

Cyberbullying can have serious and long-lasting effects on the victims, including causing emotional distress, damaging their

reputations, and impacting their mental health. People must be aware of the problem because this is a serious problem. That is why people must make sure to know more about this issue. In order to know how to recognize it, prevent it, and seek help if they or someone they know is being targeted. There are several resources and organizations available to provide support and assistance to those affected by cyberbullying, including hotlines, counseling services, and online support groups. It is likewise significant for

guardians, teachers, and different grown-ups to know about the indications of cyberbullying and to do whatever it may take to address and forestall it in their networks. The effects of cyberbullying can be devastating for the person being bullied, leading to emotional distress, social isolation, and even suicide. Therefore, it is crucial for individuals, parents, and schools to know about the indications of cyberbullying and to make a move to forestall it. By instructing ourselves and others in the dangers of cyberbullying, we can help to build a comfortable and positive online space.

Bullying on social media is a serious issue among teenagers in Indonesia and around the world. Bullying is a type of purposeful violence in which one or more persons or groups persistently cause another person bodily injury or emotional distress (Olweus, 1993; APA, 004). Due to the power disparity, victims will find it challenging to resist. (Olweus, 1993; Dillon & Rhodes, 019). This bullying spreads to social media (E-mail, Facebook, Instagram, Twitter, Blogs, YouTube, etc.) and is widely available online, which refers to cyberbullying. The terms "cyber" and "bullying," where "cyber" refers to the internet or online, combine to form the term "cyberbullying." Using electronic or digital devices to send messages (text, photographs, or videos) that are repeatedly offensive and meant to hurt other people, whether one-on-one or in groups, is referred to as this. (Englander 017 & Hutson 016).

According to Abuhammad et al. (2020), one of the theories states that people who are suffered from cyberbullying perhaps have mental issues and appear negative symptoms like depression, suicidal thoughts, and engage in delinquent behavior. This theory suggests that bullying and cyberbullying can have significant psychological effects on a person.

YouTube is widely used all around the world. In (Jayani, 020) that most social media users are around the age of 16 to 64 years with a percentage of 88% accessing the YouTube channel, and the average social media access time is spent 3 hours 6 minutes. The YouTube channel is the most popular social media platform accessed by Indonesian netizens. This is because every YouTube account owner has the freedom to upload, search for, and manage videos as they see fit. Thus, it should come as no surprise that YouTube is a widely used medium. YouTube allows users to leave comments on the videos they watch; users have a wide range of opinions and can express them in the site's comment section, although many of these remarks are critical.

Many researchers have already conducted a study on Cyberbullying. First, research by Primasti & Dewi, (2018) **investigated** the **negative** effects of social media and adolescent behavioral deviations (**cyberbullying**) its findings show that there is a compelling relationship between excessive use of Facebook and cyberbullying behavior among adolescents in Malang City. Behavioral deviations committed by adolescents in virtual activities on Facebook are mostly cyberbullying. Second, research by Munir & Harianto, (2019) saw the reality of social deviations such as cyber sexual harassment on the social media live streaming Bigo Live. Social media can be an expressive space without limits such as libido-satisfying activities. Pornographic content and virtual prostitution dominate online live-streaming shows from the Bigo Live account. Cyber sexual harassment deviations emerged as a result of changes in the order of values and norms believed by Bigo Live users, namely broadcasters and viewers. This finding once again confirms that social media users can transform into the perpetrator of deviance. Third, Yacob's findings, (2020) regarding

language use activities are in the comment column on YouTube. His research shows that netizens often add, remove, and mix phonemes in both Indonesian and foreign languages such as Bumil (pregnant mother), Debay (dedek baby), and Mantul (really good). The use of language in the comment column on YouTube can result in deviations from the development of the Indonesian language.

The previous study above only focuses on the negative side of cyberbullying. Whereas, researchers want to find something different discussion.

Based on the explanation above, the researchers are interested in conducting a study entitled **“CYBERBULLYING IN YOUTUBE’S COMMENTS ON “TRIBUN MEDAN TV CHANNEL”**

The researcher is interested in conducting a study on this matter because cyberbullying is a very interesting phenomenon to discuss and we often encounter its application on social media. The researcher hopes they can identify the types of cyberbullying used by commenters and understand how they bully others in their comments. The aim of this study so that people can anticipate the use of words in commenting on social media. If not, it can have a bad effect on the recipient.

Cyberbullying

Cyber-attacks against victims without publicity" and indirect cyber-bullying are defined as "using another person to harass the victim online or sending material, comments, or messages over the internet that spread their attacks to unknown people. (Cuadrado-Gordillo Dan Fernández-Antelo (2014).

Cyberbullying is a form of intimidation that occurs repeatedly with the aim of hurting others in the form of hostility by electronic means (Ortega, Elipe, Mora-Merchán,

Calmaestra, Dan Vega (2009) & Ortega (2012).

The use of internet devices to harass or hurt someone by using a cell phone as a tool to commit bullying (García-Moya 2014).

Cyberbullying is a condition when somebody hassles, and ridicules others on the web or uses phones or other electronic gadgets over and over. (Hinduja & Patchin, 019).

Cyberbullying is deliberate animosity or hostility or harm brought about by electronic gadgets more than once over the long run making a lopsidedness of force between the aggressor and the person in question. (Del Rey 2015).

Cyberbullying is aggression via electronic media repeatedly (for example, phones, and the internet). Traditional bullying and cyberbullying share several features in common, the latter characterized by their anonymity, which may occur at any time that day and possibly a larger audience on the internet (Gamez-Guadix 2015).

Cyberbullying is aggression that deliberately occurs in groups or individuals repeatedly from time to time by means of electronic communication against victims who cannot easily defend themselves, page 376 (Smith 2008). Cyberbullying is the term for bullying that occurs online. Potential venues include social media, chat services, gaming platforms, and mobile devices. It is a consistent practice to intimidate, irritate, or embarrass the target. Examples comprise:

1. Spreading untrue information or distributing another person's humiliating pictures or recordings via web-based entertainment.
2. Using informing applications to send hostile, oppressive, or compromising messages, pictures, or recordings.

3. Posing as another person and utilizing a misleading character to send revolting messages to other people.

In conclusion, cyberbullying is defined as bullying, threatening, and even harming a person using electronic communication which has been happening lately and can be seen in our daily life. This is a serious issue that requires attention and action in our modern world. That is why it is important for people all around the world to be aware of this big problem and must handle that. By spreading awareness and taking action against cyberbullying, we can create a safer and more supportive online environment for everyone.

Types of Cyberbullying

Willard (2007) divides cyberbullying into the following types based on her research.

1. Flaming – send aggressive, rude, and vulgar messages directed at one or more people in private or to an online group.
2. Harassment – send many times to a person an offensive message.
3. Cyberstalking – harassing behavior that is extremely intimidating or contains threats of harm.
4. Denigration (put-downs) – to send or publish harmful, false or cruel messages to other people about a specific individual.
5. Masquerade – impersonate another person to send or post material that disparages or potentially endangers that person.
6. Outing and trickery – sending or publishing information that is sensitive, private, or embarrassing about someone, including transmitting private messages or photos, or using deceptive tactics to entice embarrassing information to be made public.
7. Exclusion – the act of purposefully excluding someone from a group on the internet.
8. Impersonation – the act of pretending to be the victim and using the victim's name to send others offensive or unsuitable information via electronic communication.
9. Sexting – distributing naked images of another person without that person's permission.

Social Media

Social media is a type of web-based service that is founded on the World Wide Web's conceptual and technological basis. Additionally, permit the development and exchange of content made by users. (Kaplan & Haenlein 010: 61)

Social media are digitally services that allow users, communities, & groups can make, co-creating, editing, sharing, and talking about user-generated content that is easy to find, people can team up, communicate, socialize, and develop community. McCay-Peet and Quan-Haase (2017: 17)

YouTube

In recent years, YouTube has become one of the media that is widely used to share various kinds of content, ranging from fun content to content that is useful for many people. YouTube is a free service that facilitates the viewing of online videos. Additionally, video content can be created and uploaded for public viewing. About 6 billion hours of videos are watched each month on YouTube, making it one of the most visited websites on the internet. According to Alhamami (2013), YouTube is the website to upload, view, and share short videos. One important thing that should be aware of is we can manage, limit and select which content we want to see, explore, and to be learned.

Content can be positive and also can be negative.

RESEARCH METHOD

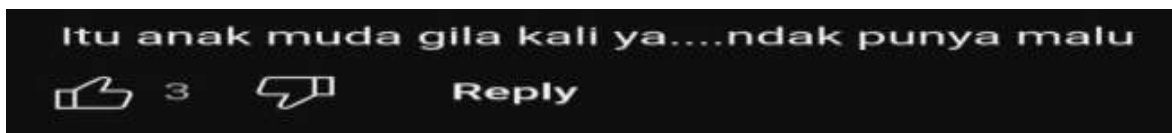
This study applies a qualitative descriptive method. It is used because it is intended to analyze and discuss the state of the current phenomenon. Nassaji (2015) states that the purpose of descriptive research is to draw and classify a phenomenon.

The data are words and sentences in the comment column of the Youtube video entitled "*PENGGEMAR Ferdy Sambo Sablon Baju dan Terobos Masuk Ruang Sidang*" which contain elements of bullying. The data source is a social media application in the form of Youtube with the account "Tribun Medan TV"

RESULTS AND DISCUSSION

First, the types of Cyberbullying are used based on the source data on YouTube's Tribun Medan TV entitled "*PENGGEMAR Ferdy Sambo Sablon Baju Dan Terobos Masuk Ruang Sidang*" the researchers only found three of them, namely: Flaming, Harassment, and Denigration.

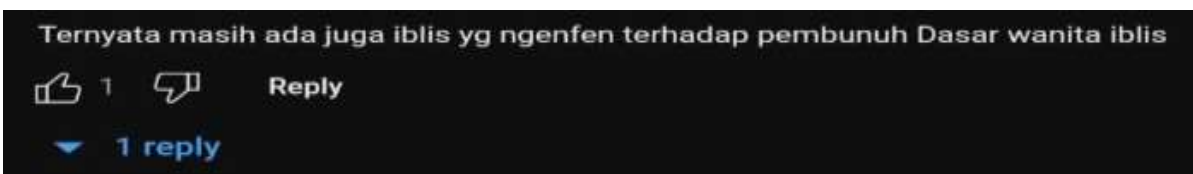
FLAMING



1. **Translation** : "That's a crazy young woman...She doesn't have any shame, Mental illness."

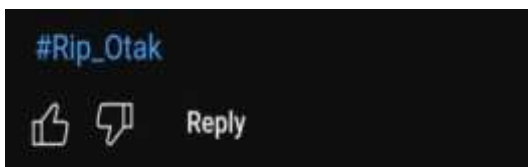
Keyword : Mental illness.

The Oxford Dictionary defines mental disease as a condition of mental pathology, or abnormalities. Sometimes, it is different in how the mind functions to body function. On the other hand, the word "*mental illness*" is a rude comment because the commenter thinks that the girl in the video seems to stand for Ferdi Sambo. Therefore, the commenter says she has got mental illness, or, in a rude way, she is crazy.



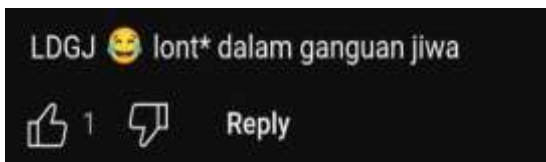
2. **Translation** : It turns out that there are also demons who are fond of killers. You devil woman
Keyword : Demons

According to the Oxford dictionary, a demon is an evil spirit, something that causes a person to worry and makes them unhappy. Of course, it is not related if we connect the sentence above to the definition of demons in general. Because the word demons here refer to something that is a rebellious person, whose soul is evil like the devil who incites people to sin. In the sentence above, the commenters said her like that because her actions it out of her mind. She is still fond of Ferdi Sambo, who is clearly a sadistic and cruel killer. Because everyone clearly knows what Ferdi Sambo is like since he was proven to have committed murder. Therefore, the commenter threw harsh words at the women in the video.



3. **Translation** : #Rip-brain
Keyword : Rip-brain

Actually, if we think deeply about it, "rip" and "brain" are not related. "Rip" is the abbreviation of "rest in peace," which is often written on graves and is used to express the hope that a person who has died will have peace in death. On the other hand, the brain is an organ. We use our brains to think and control all body functions. However, in this case, "rip brain" means that the person is acting in a stupid, crazy, or dumb manner. She did not have any intention to act like that in front of the media all around Indonesia and seemed to be happy with the things or situations that happened.

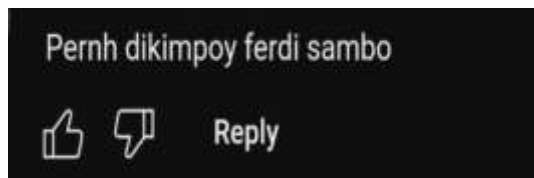


4. **Translation** : LDJG Whore in mental

disorder

- Keyword** : Whore in mental disorder

The commenter said rude and vulgar things like that because the comments might think that the woman is a prostitute from Ferdi, therefore, the woman is behaving strangely, and is not acceptable to Indonesian society. Her presence at the trial actually surprised the people there and many said harsh words like the sentence above.

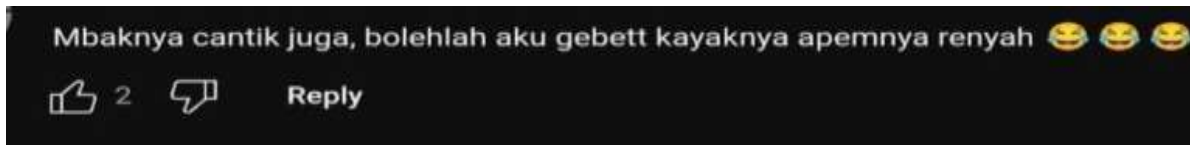


5. **Translation** : Ever fucked by Ferdi Sambo

- Keyword** : Making love "fucked"

Making love actually has different meanings and terms. Because it depends on the people how she/he views the word "making love." In this case, making love refers to fucked in slang words. in the sentence above the commenter used a slang word in Bahasa Indonesia "Dikimpoy" which is actually a vulgar comment. This happened just because the woman's action in the trial is out of his

mind and unacceptable. That's why the commenter said a vulgar comment that is actually very rude.



6. **Translation** : The woman is beautiful too, can I have a crush, I think her vagina is crunchy.

Keyword : Vagina

The sentence above contains vulgar and rude comments, including the use of the Indonesian slang word "*Apemnya*" which refers to the vagina or, in vulgar terms, the female genitalia.

The sentence above is very vulgar and rude. The commenter used a slang word in the Indonesian language, "*Apemnya.*" *Apemnya* refers to Vagina and in the vulgar word vagina. The sentence above contained a vulgar message that was addressed to the woman. It happened just because of the commenter's anger at seeing the woman's action. Perhaps the commenter cannot hold back and control himself or herself anymore. Because the commenters might think that her actions are stupid, unacceptable, and out of their mindset. That's why he or she made such vulgar comments.

HARASSMENT

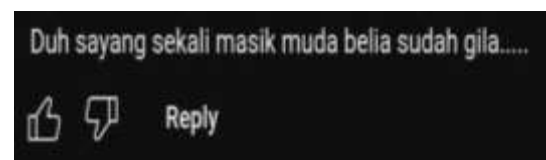


1. **Translation** : A girl with mental illness

Keyword : Mental illness

We certainly don't know whether the woman has mental illness or not because no one in the video reports that she has one. As ordinary people, of course, we see her as a normal person. Idolizing someone is a normal act. Perhaps it's because of a person's face, intelligence, kindness, ability, or other characteristics that most people lack in general. It's the same in this case. She just likes and admires Ferdi Sambo. It could be from his face or something else that made her feel amazed. The perpetrator said that she had mental

illness, not because she actually had it, but her behavior was unreasonable and unacceptable to him. She admires Ferdi Sambo, who is the defendant in the premeditated murder case against his own adjutant, Brigadier J. She admires a killer.

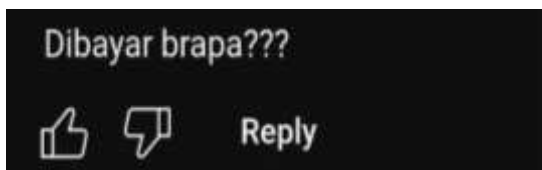


2. **Translation** : Duh, it's too bad, she is very young but already crazy.

Keyword : Crazy

According to the Cambridge dictionary, "crazy"(adj) is very strange or foolish. The word "crazy" in the sentence refers to mental illness. Actually, the perpetrator doesn't know if she has it or not, but because she did the craziest thing that he

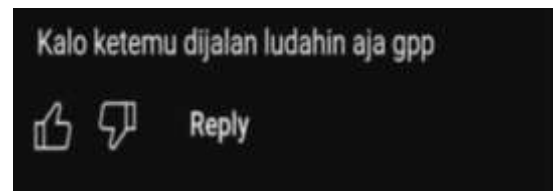
thought no one else would ever do so he called the woman crazy. This case is the same as case number one. The perpetrator said the woman was crazy because she did a strange action, that is admiring a killer. He deeply regretted the woman's action.



3. **Translation** : How much did you get paid???

Keyword : Get paid

This statement implies that the woman's actions were fabricated or fake. The perpetrator believed that the woman was requested and paid to do this. He also believed that this was part of Ferdi Sambo's scenario. That's why he asked.

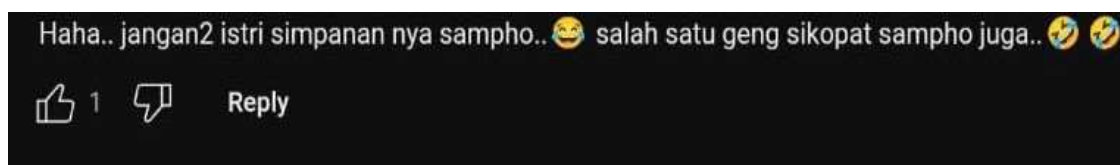


4. **Translation** : If you meet her on the street just spit on her, it's fine.

Keyword : Spit on her

According to the Oxford dictionary, the meaning of “spit” (v) is ejecting saliva forcibly from one's mouth, sometimes as a gesture of contempt or anger. The word spit on in the statement above is not an idiom or slang word, but has a meaning that is almost the same as the original meaning. In general, people spit because there is something in their mouths that makes them feel uncomfortable. Probably leftovers from the last meal are stuck in their teeth. Actually in the statement above, it's different. The act of spitting on in the above statement represents one's contempt or anger over one's dislike of another's behavior. Action like this is done on purpose and can almost hit the victim.

DENIGRATION



1. **Translation** : Haha... Maybe Ferdy Sambos's affair. Or one of Sambos' psychopath allies

Keywords : Affair and Psychopath

In the Cambridge Dictionary, an affair (n) is a sexual relationship, especially a secret one. So, the perpetrator said that this woman is Sambo's affair because he thinks this woman has the intention of supporting and idolizing a person who has clearly made a mistake, namely by killing making the perpetrator make harsh comments about this woman who has a relationship with Sambo.

In Merriam-Webster, psychopath (n) a person who is inclined to perform violent criminal activities due to a mental disorder that prevents them from feeling guilt. Because of her supporting Ferdy Sambo, who committed premeditated murder, the perpetrator said she was a

psychopath. After all, he considered the woman also a psychopath because he says that because she agreed to the actions of Sambo.

Mantan yg di open BO ketika itu.

👍 1 🗨️ Reply

2. **Translation** : An ex-prostitute woman that he rents back then

Keyword : Prostitute

In Cambridge Dictionary, a person who has sex with someone for money.

Since that prostitution is prohibited in Indonesia, Sambo should not indulge in it. This is identical to the initial word, which incorporates derogatory wording. The perpetrator uses the term prostitution because he compares the woman's conduct to those of a Sambo fan seeking financial assistance from the politician.

Ini mungkin aktrisnya Sambo....

👍 🗨️ Reply

3. **Translation** : It might be Sambo's Actress

Keyword : An actress

In Cambridge Dictionary, an actress (n) is a female actor who portrays another character in a movie, drama, or TV show. So here, the perpetrator defames the Sambo by saying the woman who supports him is called an actress, which means that this woman plays.

Kayaknya sudah kena doktrin dari FS ini

👍 🗨️ Reply

4. **Translation** : It may be the doctrine of this Ferdy Sambo.

Keyword : Doctrine

In the Cambridge Dictionary, a doctrine (n) is a political or theological doctrine that is widely taught and believed within a specific community. In this case, the perpetrator called the woman a doctrine because the impression given by this woman seemed to be that this woman already unconsciously believed in Sambo, which made the perpetrator make a rude comment.

Idolanya...??

Bisa²nanti dia bawa bom tuh 😊

👍 🗨️ Reply

5. **Translation** : Her idol? She could bring a bomb

Keyword : A bomb

For this we know that this perpetrator mentioned that this woman was accused of bringing a bomb because we know this case is very sensitive so, in this very important trial, the perpetrator commented that this woman brought a bomb because of the easy access for visitors such as this woman into the trial and might disrupt the ongoing trial.

Second, according to the scope of the source data on YouTube's Tribun Medan TV entitled "*PENGGEMAR Ferdy Sambo Sablon Baju dan Terobos Masuk Ruang Sidang,*" they bully in a variety of ways including typing, rough comments, stating negative judgment, sending angry, rude, vulgar messages, their language being kind of

vulgar, repeatedly sending an offensive message, sending untrue, or cruel statements, and most of the comments using informal language (using slang words).

Finally, based on the related theories, the researchers discovered three types of cyberbullying data from nine types of cyberbullying. Three types of data were discovered: flaming, harassment, and denigration. Flaming (six data), Harassment (four data), and Denigration (five data).

CONCLUSION

Based on the results of this study, cyberbullying is a regular occurrence on social media platforms. This study utilizes YouTube as a platform. The report identifies nine types of cyberbullying: flame, harassment, stalking, denigration (put-downs), masquerade, outing and trickery, exclusion, impersonation, and sexting. There are fifteen data sources about the three categories of cyberbullying within the scope of the research. In addition, researchers have identified numerous ways in which people engage in cyberbullying, including by typing, making rude comments, expressing negative judgments, sending angry, rude, or offensive messages, using vulgar language, repeatedly sending offensive messages, making untrue or cruel statements, and using informal language (slang words) in the majority of comments. Importantly, cyberbullying can occur on any social media site; therefore, we must exercise caution when using social media.

REFERENCES

- Abuhammad, S. (2020). Parents' knowledge and attitude towards COVID-19. *Children: A Jordanian Study*. (July), 1–6.
- Al-Hamami, A., dan Al-Samadi, S. (2013). Enhancement of Missing Values Prediction and Estimation Using Data Mining Algorithm. *Journal of Emerging Trends in Computing and Information Science*
- Andres Kaplan & Michael Haenlein, 010. *User Of The World, Unite! The Challenges and Opportunities of Social Media, Business Horizons*.
- Cuadrado-Gordillo and Fernández-Antelo (2014). Cyberspace as a generator of changes in the aggressive-victim role Computers. *Human Behavior*, 36 (2014), 25-233
- Del Rey et al. (2015). Structural validation and cross-cultural robustness of the European Cyberbullying Intervention Project Questionnaire Computers. *Human Behavior*, 50 (2015), 141-147
- Englander, E. et al. (2017) 'Defining cyberbullying', *Pediatrics*, 140, S148–S151.
- Gámez-Guadix et al. (2015). Stability of cyberbullying victimization among adolescents: Prevalence and association with bully-victim status and psychosocial adjustment. Computers. *Human Behavior*, 53 (2015), 140-148
- García-Moya et al. (2014). Bullying victimization prevalence and its effects on psychosomatic complaints: can sense of coherence make a difference? *Journal of School Health*, 84, 646-653
- Harrison, I., M. Laverly and E. Sterling. 004. *Genetic Diversity. Connexions* module: 12158.

- Hinduja & Patchin, (2019). Bias-Based Cyberbullying Among Early Adolescents: The Role of Cognitive and Affective Empathy. *Forthcoming in the Journal of Early Adolescence*.
- Hutson, E. (2016) 'Cyberbullying in adolescence: A concept analysis', *Advances. Nursing Science*, 39 (1), 60–70.
- Jayani. (2020, Februari 10). 10 *Media Sosial yang Sering Digunakan* 020. From Databoks
Katadata: <https://databoks.katadata.co.id/10-media-sosial-paling-banyak-digunakan-2020>
- McCay-Peet, L. & Quan-Haase, A. (2017). What is Social Media and What Questions Can Social Media Research Help Us Answer? In Sloan, L. & Quan-Haase, A. (1), *The SAGE Handbook of Social Media Research Methods* (pp. 13-26). SAGE Publications Ltd.
- Olweus, D. (1993) *Bullying at School: What we know and what we can do*, Blackwell Publishing.
- Ortega, Elipe, Mora-Merchán, Calmaestra, and Vega (2009)/ Ortega et al. (2012). The emotional impact on victims of traditional bullying and cyberbullying: A study of Spanish adolescents
- Willard, N. (2007). *Cyberbullying and cyberthreats: Responding to the Challenge of Online Social cruelty, Threats, and Distress*. Journal Champaign, IL, Research Press.
- Zeitschrift für Psychologie/Journal of Psychology, 17 (2009), 197-204
- Internet**
<https://www.unicef.org/end-violence/how-to-stop-cyberbullying> Accessed on Sunday, December 4th, 2022 at 23.40pm.
<https://youtu.be/IZvezUrraJI> Accessed on Thursday, December 1st, 2022 at 12.43pm.